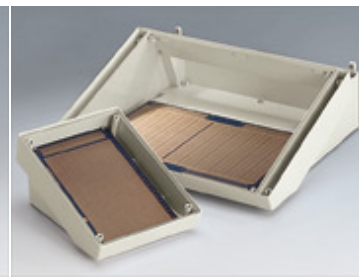


 Switch To Metric Dimensions

 Printable Page

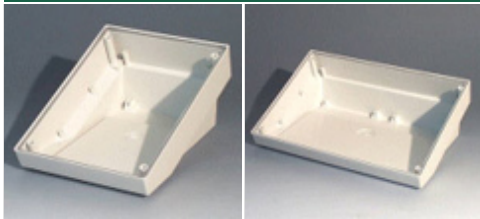


Large Rear Wall



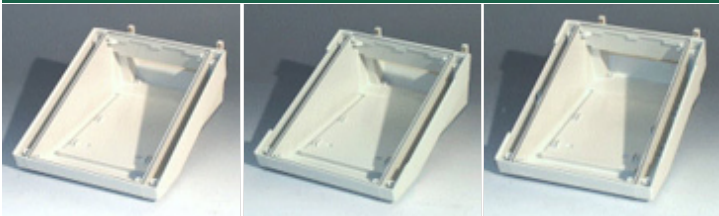
Mounting for Eurocards

**DATEC-TERMINAL S & SL**



Part #	Part #	Description	L	W	H	Metric Drawings
B4013117	\$	DATEC-TERMINAL S	7.087"	5.118"	3.386"	PDF
	B4026117	\$ DATEC-TERMINAL SL	7.087"	10.394"	3.386"	PDF
						DWG

**DATEC-TERMINAL M**



Part #	Part #	Part #	Description	L	W	H	Metric Drawings
B4016117	\$		DATEC-TERMINAL M - Version I	10.709"	6.614"	3.976"	PDF
	B4016217	\$	DATEC-TERMINAL M - Version II	10.709"	6.614"	3.976"	PDF
		B4016317	\$ DATEC-TERMINAL M - Version III	10.709"	6.614"	3.976"	PDF
						DWG	

**Notes:**  
 Version I - Standard housing  
 Version II - Housing machined for hinge kit. Kit includes a hinge kit with quick action lock for covers  
 Version III - As Version II, but housing also machined for a key lock. Key lock included in kit

**DATEC-TERMINAL L**



Part #	Part #	Part #	Description	L	W	H	Metric Drawings
B4030117	\$		DATEC-TERMINAL L - Version I	10.709"	11.890"	3.976"	PDF
	B4030217	\$	DATEC-TERMINAL L - Version II	10.709"	11.890"	3.976"	PDF
		B4030317	\$ DATEC-TERMINAL L - Version III	10.709"	11.890"	3.976"	PDF
						DWG	

**Notes:**  
 Version I - Standard housing  
 Version II - Housing machined for hinge kit. Hinge kit with quick action lock for covers included  
 Version III - As Version II, but housing also machined for a keylock. Keylock also included in kit

## COVERS

For..	Part # ABS Cover		Part # Polycarbonate Cover		Part # Deep ABS Cover		Metric Drawings	
	Part #	\$	Part #	\$	Part #	\$	PDF	DWG
DATEC-TERMINAL S	B4013617	\$	B4013621	\$			PDF	DWG
DATEC-TERMINAL SL	B4026617	\$	B4026621	\$			PDF	
DATEC-TERMINAL M	B4016617	\$	B4016621	\$			PDF	
DATEC-TERMINAL M					B4016657	\$	PDF	
DATEC-TERMINAL L	B4030617	\$	B4030621	\$			PDF	
DATEC-TERMINAL L					B4030657	\$	PDF	

## CONVEX COVERS

For..	Part # ABS Convex Cover		Part # Transparent Cover Strip*		Part # ABS Cover Strip*		Metric Drawings	
	Part #	\$	Part #	\$	Part #	\$	PDF	DWG
DATEC-TERMINAL S	B4013637	\$	B4113671	\$	B4113677	\$	PDF	DWG
DATEC-TERMINAL SL	B4026637	\$	B4113671	\$	B4113677	\$	PDF	
DATEC-TERMINAL M	B4016637	\$	B4016671	\$	B4016677	\$	PDF	
DATEC-TERMINAL L	B4030637	\$	B4016671	\$	B4016677	\$	PDF	

## REAR LIDS FOR M & L

For..	Part # Closed Lid Flat		Part # Closed Lid High		Part # Lid for Magnetic Card Readers		Part # Lid for Bar Code Readers		Part # Mounting Plate for Magnetic Card Readers*		Metric Drawings	
	Part #	\$	Part #	\$	Part #	\$	Part #	\$	Part #	\$	PDF	DWG
DATEC-TERMINAL M	B4016417	\$									PDF	DWG
DATEC-TERMINAL M			B4016457	\$							PDF	
DATEC-TERMINAL M					B4016917	\$					PDF	
DATEC-TERMINAL M							B4016017	\$			PDF	
DATEC-TERMINAL M									B4116136	\$	PDF	
DATEC-TERMINAL L	B4030417	\$									PDF	
DATEC-TERMINAL L					B4030917	\$					PDF	
DATEC-TERMINAL L									B4116136	\$	PDF	

**Notes:**

\* Mounting plate B4116136 fits to lid B4016917

## ALUMINUM FRONT PANELS & WALL MOUNTING PLATE

For..	Part # Full Front Panel*	Part # Recessed Profile Plate*	Part # Sub Front Panel*	Part # Wall Mounting Plate*	Metric Drawings
DATEC-TERMINAL S	B4113106				PDF
DATEC-TERMINAL S		B4113126			PDF
DATEC-TERMINAL S				B4113147	PDF
DATEC-TERMINAL SL	B4126106				PDF
DATEC-TERMINAL SL		B4126126			PDF
DATEC-TERMINAL SL				B4126147	PDF
DATEC-TERMINAL M	B4116106				PDF
DATEC-TERMINAL M		B4116126			PDF
DATEC-TERMINAL M			B4116116		PDF
DATEC-TERMINAL M				B4116147	PDF
DATEC-TERMINAL L	B4130106				PDF
DATEC-TERMINAL L		B4130126			PDF
DATEC-TERMINAL L			B4130116		PDF
DATEC-TERMINAL L				B4130147	PDF

DWG

**Notes:**

- \* Full Front Panel - Simple large anodized front panel. Fitted from the front by four self-tapping screws
- \* Recessed Profile Plate - Front panel extrusion, recessed for keypads etc. Secured to the case by two ABS trims and four fixing screws
- \* Sub Front Panel - Anodized front panel fits inside the front aperture when a transparent Cover is being fitted
- \* Wall Mounting Plate - Zinc plated steel. For easy wall mounting. Machining required for cases S & SL - See Drawing [PDF](#)

**PCB MOUNTING SCREWS**

For..	Part # PCB Screw Ø3 x 6mm*	Part # PCB Screw Ø3 x 8mm*	Part # PCB Screw Ø2.5 x 6mm*
DATEC-TERMINAL S, SL, M & L	A0306031	A0308031	
All DATEC-TERMINAL Covers			A0305031

**Notes:**

- \* Self-tapping 'Plastite' screws - for mounting PCBs and components to the internal screw pillars
- \* Select the screw length to suit the thickness of the PCB/component being fitted

[Printable Page](#)



[Get a Sample](#)



[Get a Catalog](#)



[Customizing](#)